



# Addressing Unavoidable Non-Economic Losses to Climate-Induced Events for Communities in the Arctic

## Research questions:

- What types of non-economic losses and damages can be expected in the Arctic?
- What non-economic losses and damages versus adaptation trade-offs are communities willing to make?
- How can we deliver the evidence required to articulate just responses to non-economic losses and damages?
- What types of responses to non-economic losses and damages do Arctic communities prefer?

UNIVERSITY  
COLLEGE  
COPENHAGEN



UNIVERSITY  
OF BERGEN



Háskóla- og  
Vestfirðis  
University Centre  
of the Westfjords



FRÓÐSKAPARSETUR  
FØROYA

University of the Faroe Islands



UNIVERSITY  
OF ALBERTA



SDU  
Climate Cluster



LULEÅ  
TEKNISKA  
UNIVERSITET



UNIVERSITY  
OF TURKU

OCEANS  
NORTH  
KALAALLIT NUNAAT



University of Colorado Boulder



NordForsk

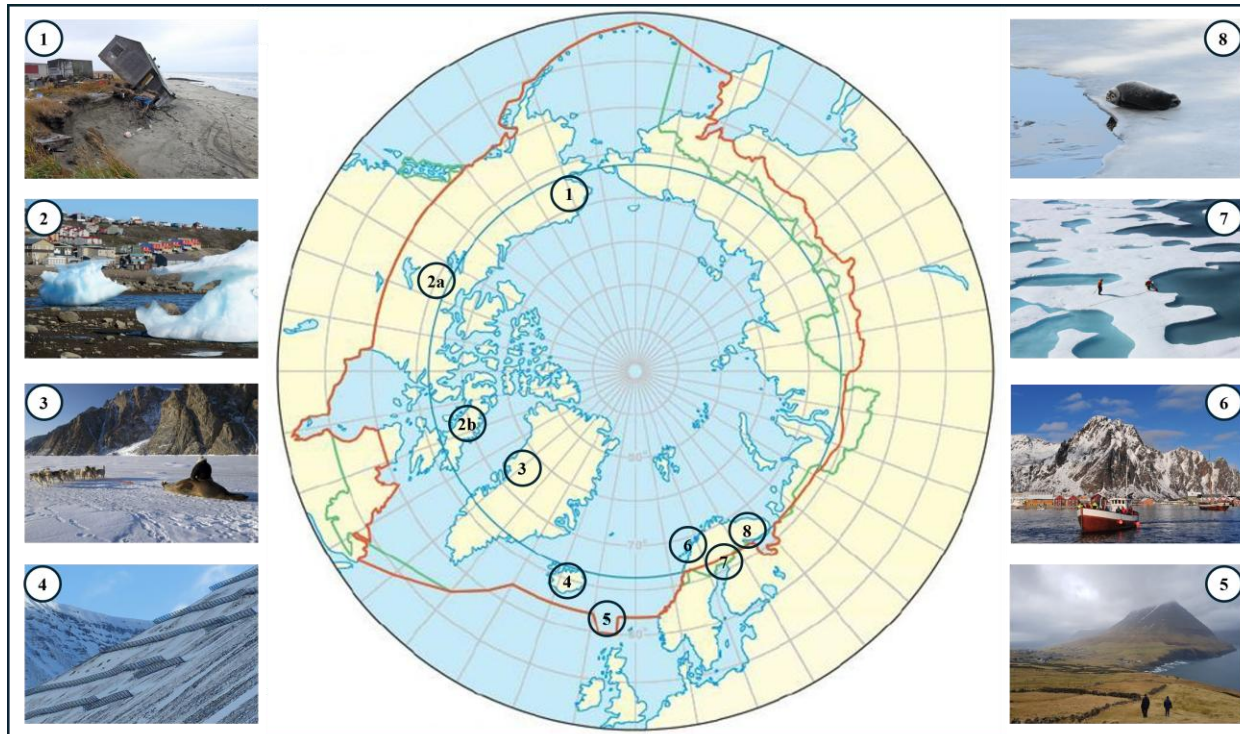
This project has received funding from the NordForsk Sustainable Development of the Arctic Programme. Grant Agreement No. 213038



New Frontiers in Research Fund  
Fonds Nouvelles frontières en recherche

We acknowledge the support of the Government of Canada's New Frontiers in Research Fund (NFRF), [NFRFJ-2024-00014]

# Case Studies Across the Arctic Region



[www.losttoclimate.org](http://www.losttoclimate.org)

