



Addressing Unavoidable Non-Economic Losses to Climate-Induced Events for Communities in the Arctic

Research questions:

- What types of non-economic losses and damages can be expected in the Arctic?
- What non-economic losses and damages versus adaptation trade-offs are communities willing to make?
- How can we deliver the evidence required to articulate just responses to non-economic losses and damages?
- What types of responses to non-economic losses and damages do Arctic communities prefer?



UNIVERSITY
OF BERGEN



University of Colorado Boulder



LULEÅ
TEKNISKA
UNIVERSITET



OCEANS
NORTH
KALAALLIT NUNAAT

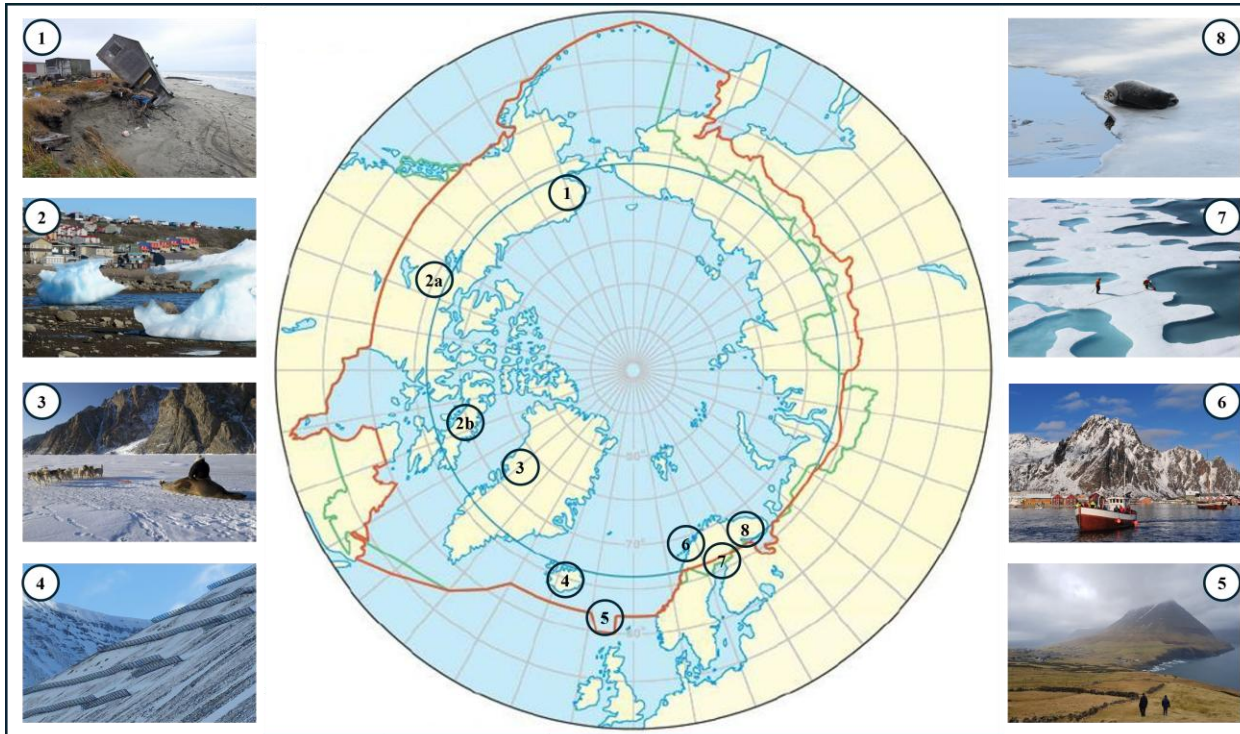


This project has received funding from the NordForsk Sustainable Development of the Arctic Programme. Grant Agreement No. 213038



We acknowledge the support of the Government of Canada's New Frontiers in Research Fund (NFRF), [NFRFJ-2024-00014]

Case Studies Across the Arctic Region



www.losttoclimate.org



- and follow on

